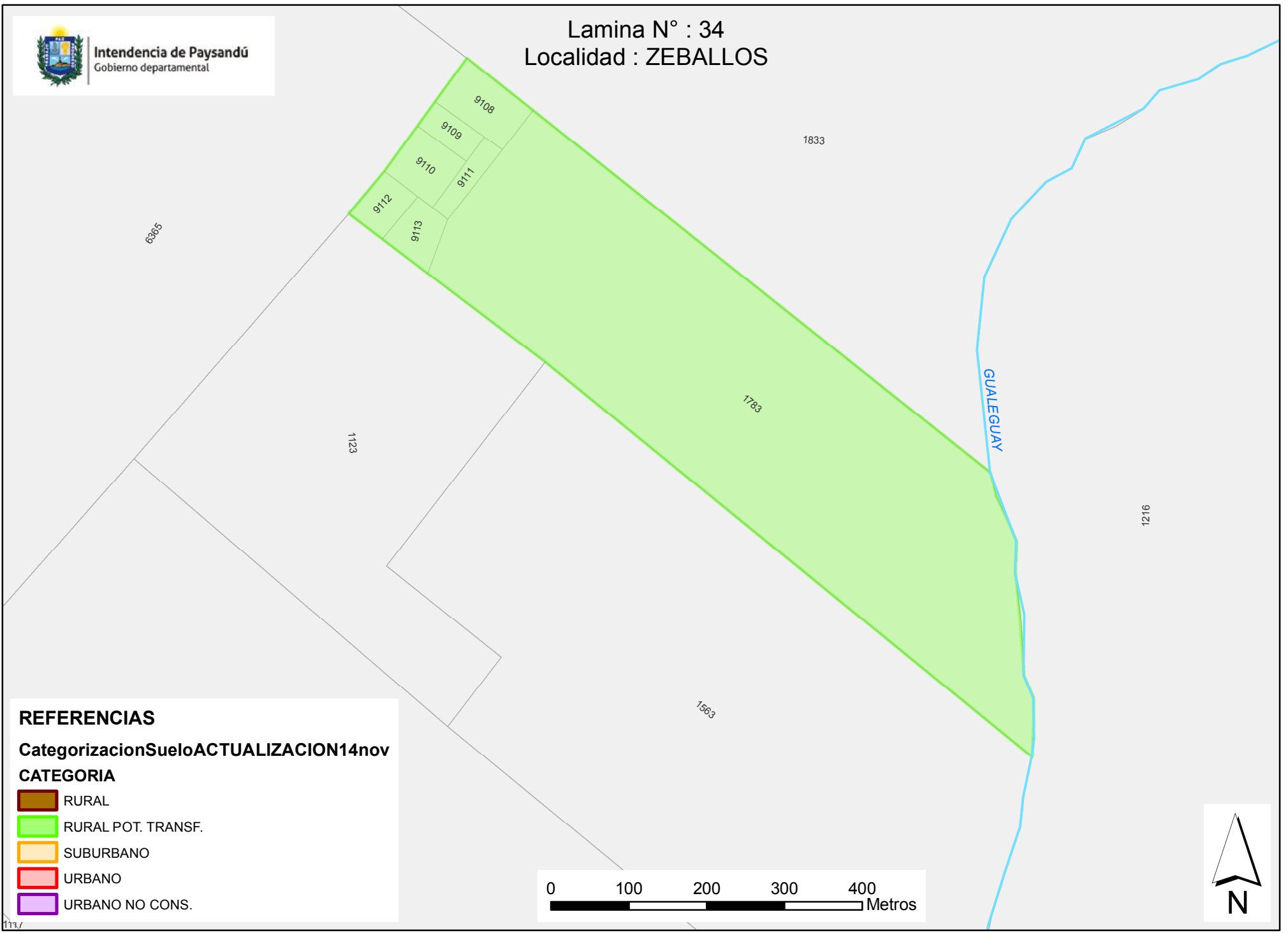




Intendencia de Paysandú
Gobierno departamental

Lamina N° : 34






Localidad : ZEBALLOS



REFERENCIAS

Categorización Suelo ACTUALIZACIÓN 14 nov

CATEGORIA

-  RURAL
-  RURAL POT. TRANSF.
-  SUBURBANO
-  URBANO
-  URBANO NO CONS.

